



NEW JERSEY CONSERVATION BLUEPRINT

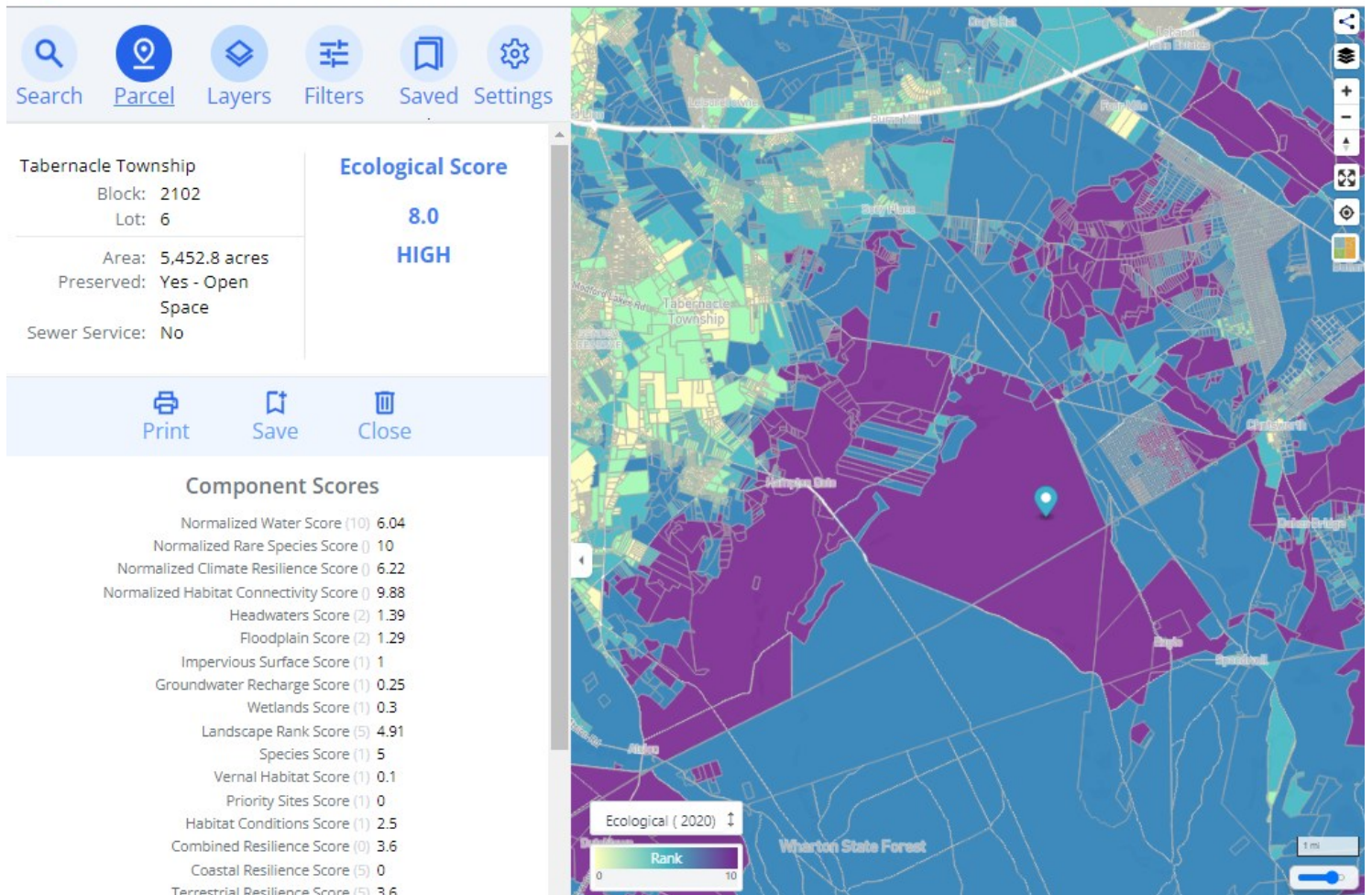
engage. protect. restore.

Conservation Blueprint⁺ is a new addition to the suite of Conservation Blueprint tools. Plus offers a new way of visualizing the Eco, Ag and Water models by displaying each parcel according to its model priority rankings. Compare the relative conservation value of multiple parcels and view details about the natural features that contribute to parcel priority rankings.



Conservation Blueprint

engage. protect. restore.



Using this new tool you can:

- ◆ View model priorities by parcel.
- ◆ Get data about one parcel, or multiple parcels together.
- ◆ Easily understand how a parcel is prioritized by the Eco, Ag or Water models and which natural features contribute to how it ranks.
- ◆ Create, save & print and share parcel reports for single or multiple parcels. Customize your report by including a map and/or natural feature values.
- ◆ Filter parcels based on your own criteria. For example, you can filter parcels by size, display parcels that have the highest preservation priority, show parcels that rank highly for climate resilience and more!



NEW JERSEY CONSERVATION BLUEPRINT

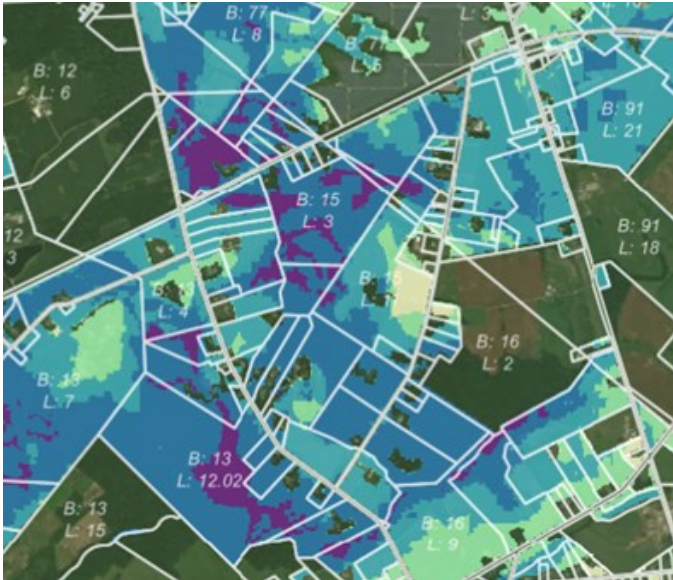
engage. protect. restore.

What are the similarities and differences between Blueprint and Blueprint⁺ maps?

Blueprint and **Blueprint⁺** use the exact same priority models, methodologies and input datasets.

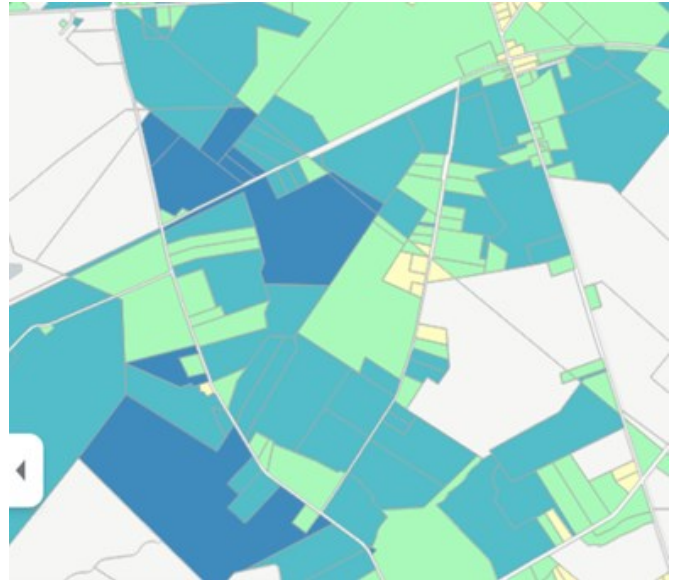
The main difference is in the way in which priority models are visualized. **Blueprint** displays priorities using a grid format where each cell in the grid covers approximately ¼ acre of land. Cells in the grid are positioned without reference to parcel boundaries so that data is displayed according to the approximate location of natural resources on the ground.

Blueprint⁺ takes the same models and displays priorities on a parcel basis. This allows a user to easily compare the relative conservation value of properties. In addition **Blueprint⁺** also displays model component data so you can see which natural features contribute to the priority ranking of a parcel.



Blueprint

Priority displayed according to the approximate location of natural features on the ground



Blueprint⁺

Priorities displayed parcel by parcel

